

Smart Energy Management System Using IOT And Machine Learning

¹Dr.Radha Krishna An,²Dr.V Venkanna

¹Assistant Professor, Department of Electronics Communication & Engineering, Brilliant Grammar School Educational Society's Group of Institutions - Integrated Campus

¹Email: dr.radhakrishnaece@gmail.com

²Assistant Professor, Department of Electronics Communication & Engineering, Brilliant Grammar School Educational Society's Group of Institutions - Integrated Campus

²Email: drvenkannav@gmail.com

ABSTRACT

The rapid growth in energy consumption and the increasing demand for sustainable power utilization have highlighted the need for intelligent energy management solutions. The Smart Energy Management System Using IoT and Machine Learning is designed to monitor, analyze, and optimize energy usage in residential, commercial, and industrial environments. The system integrates Internet of Things (IoT) devices such as smart meters, current sensors, voltage sensors, and environmental sensors to collect real-time energy consumption data. This information is transmitted to a cloud platform, where it is stored and processed for further analysis. Machine Learning (ML) algorithms are employed to identify energy consumption patterns, forecast future electricity demand, and detect abnormal usage that may indicate energy wastage or equipment malfunction. Based on these predictions, the system provides intelligent recommendations for efficient energy utilization and can automatically control connected electrical appliances to minimize unnecessary power consumption. Real-time monitoring dashboards and mobile notifications enable users to track their energy usage and make informed decisions to reduce electricity costs. The proposed system enhances energy efficiency, reduces operational expenses, and supports environmental sustainability by minimizing carbon emissions. Furthermore, predictive analytics improves the reliability of energy distribution while enabling proactive maintenance of electrical equipment. By combining IoT-enabled data acquisition with Machine Learning-based decision-making, the system offers a scalable, cost-effective, and intelligent solution for modern smart homes, smart buildings, and industrial energy management, contributing to the development of sustainable and energy-efficient smart cities.

Keywords: Internet of Things (IoT), Smart Energy Management, Machine Learning, Energy Consumption Prediction, Smart Metering, Predictive Analytics, Real-Time Monitoring, Energy Efficiency, Cloud Computing, Smart Grid.

I. INTRODUCTION

The increasing demand for electrical energy, coupled with rapid urbanization and industrial growth, has made efficient energy management a critical requirement across residential, commercial, and industrial sectors. Traditional energy monitoring systems primarily record electricity consumption without providing intelligent insights into usage patterns or opportunities for optimization. As a result, excessive energy consumption, higher electricity costs, and unnecessary carbon emissions have become significant challenges. The emergence of the Internet of Things (IoT) and Machine Learning (ML) has created new possibilities for developing smart systems capable of monitoring, analyzing, and optimizing energy usage in real time.

The Internet of Things enables interconnected devices such as smart meters, voltage sensors, current sensors, and environmental sensors to continuously collect energy-related data. These devices communicate with cloud-based platforms through wireless networks, allowing users to access real-time information from anywhere. Continuous data collection not only improves visibility into electricity consumption but also provides a reliable foundation for advanced analytics. The integration of IoT technology significantly enhances the accuracy, scalability, and automation of modern energy management systems.

Machine Learning further strengthens the capabilities of smart energy management by extracting meaningful insights from historical and real-time energy data. ML algorithms can identify

consumption trends, forecast future energy demand, detect abnormal power usage, and recommend optimal energy-saving strategies. Predictive analysis also enables proactive maintenance by identifying potential equipment failures before they occur, thereby improving system reliability and reducing maintenance costs. These intelligent features help consumers make informed decisions while supporting efficient resource utilization.

The proposed Smart Energy Management System Using IoT and Machine Learning combines IoT-based sensing technology with Machine Learning algorithms to create an intelligent platform for energy monitoring and optimization. The system collects real-time electricity consumption data through IoT sensors, securely stores the information on a cloud platform, and applies predictive models to analyze energy usage patterns. Based on the analysis, the system generates recommendations and can automatically control connected electrical devices to minimize unnecessary energy consumption while maintaining user comfort.

This integrated approach offers numerous advantages, including reduced electricity bills, improved energy efficiency, enhanced operational reliability, and lower environmental impact. It supports the transition toward smart homes, intelligent buildings, and smart industrial environments by enabling automated and data-driven energy management. Furthermore, the system contributes to sustainable development by promoting responsible energy utilization and reducing greenhouse gas emissions. As IoT infrastructure and Machine Learning technologies continue to evolve, intelligent energy management systems are expected to play a vital role in building future smart cities and achieving global energy sustainability goals.

II. LITERATURE SURVEY

1. Title: A Survey on Internet of Things (IoT): Architecture, Enabling Technologies, Security and Privacy, and Applications

Author(s): Mohammad A. Razzaque, Marija Milojevic-Jevric, Andrei Palade, Siobhan Clarke

Abstract:

This survey presents a comprehensive overview of

IoT architecture, communication technologies, security challenges, and application domains. It explains how IoT devices collect and exchange real-time data through interconnected networks, enabling intelligent monitoring and automation. The study highlights the importance of cloud computing and sensor technologies in developing smart systems such as smart homes, healthcare, agriculture, and energy management. The findings indicate that IoT provides a reliable foundation for real-time data acquisition, making it an essential technology for smart energy management solutions.

2. Title: Machine Learning Applications in Smart Energy Systems: A Review

Author(s): Ahmad Zameer, Muhammad Arshad, Muhammad Bilal

Abstract:

This review discusses the application of Machine Learning techniques in modern energy systems. Various ML algorithms, including Decision Trees, Random Forest, Support Vector Machines, and Artificial Neural Networks, are evaluated for energy demand forecasting, anomaly detection, and energy optimization. The study concludes that Machine Learning significantly improves prediction accuracy and enables intelligent decision-making, leading to better energy efficiency and reduced operational costs.

3. Title: Smart Energy Management System Based on Internet of Things

Author(s): M. S. Hossain, Ghulam Muhammad

Abstract:

This paper proposes an IoT-enabled smart energy management framework that continuously monitors electricity consumption using smart sensors and wireless communication technologies. The collected data is transmitted to a cloud platform for storage and analysis, allowing users to monitor energy usage remotely. The system demonstrates improved energy efficiency by identifying unnecessary power consumption and enabling automated control of electrical appliances.

4. Title: A Review of Machine Learning Techniques for Energy Consumption Forecasting

Author(s): José R. Sola, David Pérez

Abstract:

This review examines different Machine Learning models used for predicting energy consumption across residential and commercial buildings. The study compares regression models, Artificial Neural Networks, Support Vector Regression, and ensemble learning methods. Experimental results show that ensemble and deep learning models provide higher forecasting accuracy, helping utilities optimize power generation and distribution while reducing energy waste.

5. Title: IoT and Artificial Intelligence for Smart Energy Management in Smart Cities

Author(s): S. Kumar, R. Sharma

Abstract:

This research explores the integration of IoT and Artificial Intelligence for smart city energy management. The proposed system collects real-time data from distributed IoT devices and applies AI algorithms to optimize electricity consumption. The study reports that intelligent automation, predictive analytics, and real-time monitoring contribute to lower electricity costs, improved grid reliability, and reduced carbon emissions. The authors conclude that combining IoT with Machine Learning provides an effective solution for sustainable energy management in future smart cities.

III. EXISTING SYSTEM

The existing energy management systems are primarily based on conventional electricity meters and manual monitoring methods. These systems are designed to measure the total amount of electricity consumed over a specific period, but they provide only limited information about individual appliance usage or real-time energy consumption. Consumers typically receive monthly electricity bills without detailed insights into their consumption patterns, making it difficult to identify areas where energy can be saved. As a result, energy wastage often goes unnoticed, leading to increased electricity costs and inefficient resource utilization.

Most traditional energy management solutions lack real-time monitoring and remote accessibility. Since these systems do not continuously collect and

transmit energy usage data, users cannot monitor electricity consumption instantly or take immediate corrective actions. Furthermore, conventional systems are unable to detect abnormal power usage, equipment faults, or energy leakages at an early stage. This limitation increases maintenance costs and reduces the overall reliability of electrical systems, especially in commercial and industrial environments where uninterrupted power management is essential.

Another significant limitation of the existing systems is the absence of intelligent decision-making capabilities. Traditional approaches rely on historical billing data rather than predictive analysis, making it impossible to forecast future energy demand or optimize power consumption automatically. They do not utilize Machine Learning algorithms to analyze consumption patterns, identify anomalies, or recommend energy-saving measures. Consequently, these systems fail to support proactive energy management and cannot adapt to changing energy requirements.

Although some modern systems incorporate basic IoT-enabled smart meters, many of them focus only on data collection and visualization without advanced analytics or automated control. They often require manual intervention to interpret the collected information and implement energy-saving actions. Additionally, limited integration with cloud computing and intelligent automation reduces their scalability and effectiveness. These shortcomings highlight the need for a more advanced energy management solution that combines IoT-based real-time monitoring with Machine Learning techniques to enable predictive analysis, intelligent automation, and efficient energy optimization.

IV. PROPOSED SYSTEM

The proposed Smart Energy Management System Using IoT and Machine Learning is designed to provide an intelligent, automated, and real-time solution for monitoring and optimizing electricity consumption. The system integrates IoT-enabled smart sensors, such as current sensors, voltage sensors, power meters, and environmental sensors, to continuously collect energy usage data from electrical appliances and equipment. The collected data is transmitted through wireless communication technologies to a cloud platform, where it is securely stored and processed. This enables users to monitor their energy consumption remotely through a web or

mobile application, providing greater visibility and control over electricity usage.

Machine Learning algorithms play a crucial role in analyzing the collected data to identify energy consumption patterns, forecast future electricity demand, and detect abnormal usage that may indicate energy wastage or equipment malfunction. By learning from historical and real-time data, the system generates accurate predictions and provides intelligent recommendations for reducing unnecessary power consumption. The predictive capability also supports preventive maintenance by identifying potential faults before they become critical, thereby improving the reliability and lifespan of electrical devices.

The proposed system further incorporates automated control mechanisms that can switch electrical appliances on or off based on predefined rules, user preferences, or Machine Learning predictions. This automation reduces human intervention while ensuring efficient utilization of electrical energy. Real-time alerts and notifications are sent whenever unusual energy consumption or system faults are detected, enabling users to take immediate corrective actions. The cloud-based architecture also allows secure data storage, easy scalability, and continuous access to energy reports from any location.

Overall, the proposed system combines the strengths of IoT, cloud computing, and Machine Learning to create a smart, efficient, and scalable energy management platform. It minimizes electricity wastage, lowers operational costs, enhances energy efficiency, and reduces environmental impact through optimized power utilization. The system is suitable for residential buildings, commercial establishments, industrial facilities, and smart city applications, where intelligent energy management is essential for achieving sustainability and improving overall energy performance.

V. SYSTEM ARCHITECTURE

The architecture of the Smart Energy Management System Using IoT and Machine Learning consists of six major layers that work together to collect, transmit, analyze, and optimize energy consumption. The system begins with IoT-enabled sensing devices and ends with intelligent control of electrical

appliances, providing an efficient and automated energy management solution.

The Data Acquisition Layer is the first stage of the architecture, where various IoT sensors continuously collect real-time energy-related information. Smart energy meters measure the total electricity consumption, while current and voltage sensors monitor electrical parameters. Environmental sensors, such as temperature and humidity sensors, provide additional information that influences energy usage. Data from electrical appliances is also captured to understand their operational behavior. This layer forms the foundation of the system by generating accurate and continuous energy consumption data.

The collected information is then transmitted through the Communication Layer, which ensures reliable and secure data transfer between IoT devices and the cloud platform. Various communication technologies such as Wi-Fi, LoRa, ZigBee, Bluetooth, and 4G/5G are used depending on the application requirements. These wireless communication protocols enable long-range connectivity, low power consumption, and real-time data transmission, allowing the system to operate efficiently in residential, commercial, and industrial environments.

After transmission, the data reaches the Cloud/Data Layer, where it is stored, processed, and managed. The cloud server acts as the central repository for all energy-related information and provides scalable storage and computing resources. During this stage, data ingestion, preprocessing, and storage are performed to prepare the collected information for advanced analysis. Cloud computing enables users to access energy data remotely while supporting large-scale deployment and secure information management.

The processed data is then analyzed in the Machine Learning Layer, which represents the intelligence of the proposed system. Data preprocessing techniques are first applied to remove inconsistencies and prepare the dataset for analysis. Machine Learning models are trained using historical and real-time energy consumption data to recognize usage patterns, forecast future electricity demand, and detect abnormal energy consumption. These predictive capabilities help identify energy wastage, equipment faults, and inefficient operational behaviors before they become serious problems.

The results generated by the Machine Learning models are presented through the Application Layer. This layer provides an easy-to-use interface in the

form of web dashboards and mobile applications, allowing users to monitor energy consumption in real time. The application also generates alerts and notifications whenever abnormal energy usage or equipment faults are detected. Detailed energy reports and analytics help users understand consumption trends and make informed decisions regarding energy conservation. In addition, automated load management recommendations are provided to improve overall energy efficiency. Finally, the Actuation/Control Layer performs intelligent control actions based on Machine Learning predictions and user-defined preferences. A control unit communicates with relay modules and smart switches to automatically operate connected electrical appliances such as lights, fans, air conditioners, and motors. By turning devices on or off according to demand and predicted energy requirements, the system minimizes unnecessary electricity consumption while maintaining user comfort and operational efficiency. Overall, the proposed architecture integrates IoT sensing, wireless communication, cloud computing, Machine Learning, and intelligent automation into a unified framework. The continuous flow of data between these layers enables real-time monitoring, accurate energy prediction, anomaly detection, and automated appliance control. As highlighted in the architecture, the system offers several important benefits, including real-time monitoring, energy optimization, cost reduction, anomaly detection, predictive maintenance, and environmental sustainability, making it a highly effective solution for smart homes, industries, commercial buildings, and future smart city applications.

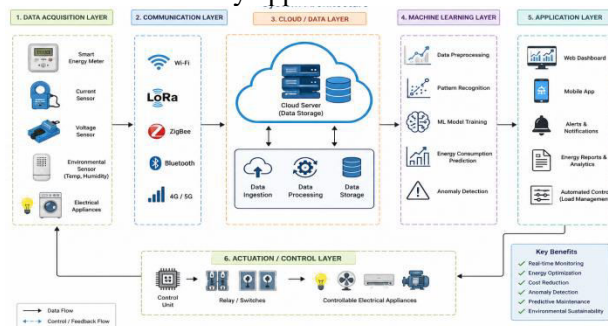


Fig 5.1: System Architecture

VI. IMPLEMENTATION

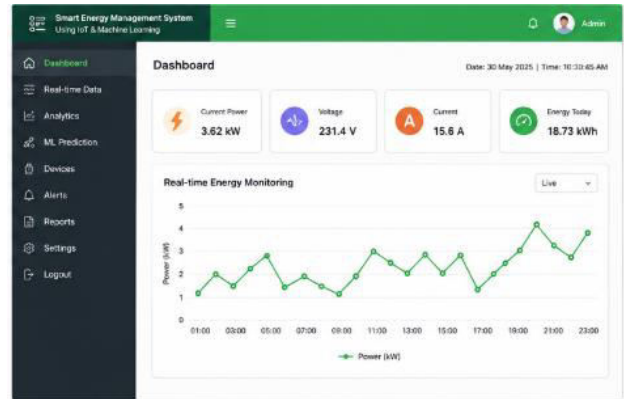


Fig 6.1: Dashboard

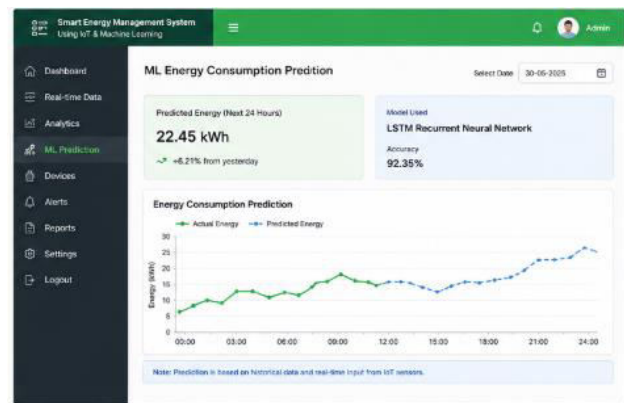


Fig 6.2: ML Prediction

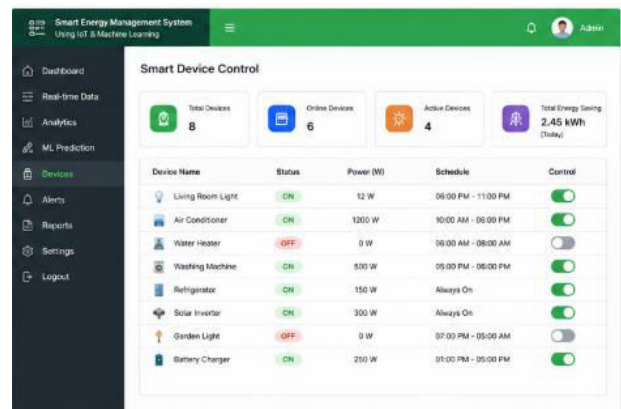


Fig 6.3: Smart Device Control

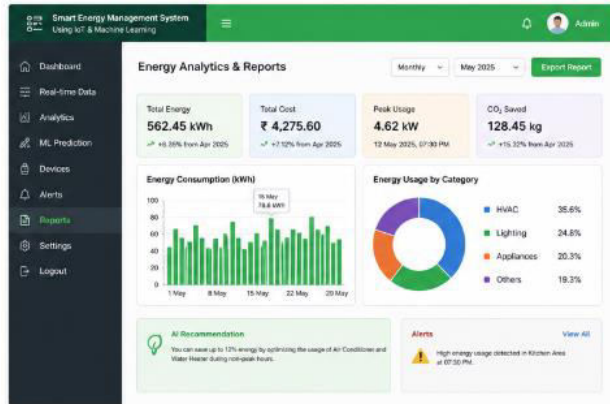


Fig 6.4: Energy Analytics & Reports

VII. CONCLUSION

The Smart Energy Management System Using IoT and Machine Learning demonstrates an effective approach to monitoring, analyzing, and optimizing energy consumption in residential, commercial, and industrial environments. By integrating IoT sensors with machine learning algorithms, the system collects real-time energy data, predicts future power usage, and provides intelligent recommendations to reduce unnecessary energy consumption. This enables users to make informed decisions while improving operational efficiency and minimizing energy wastage.

The proposed system offers continuous monitoring, automated device management, predictive analytics, and remote accessibility through a user-friendly dashboard. Machine learning enhances the accuracy of energy demand forecasting, while IoT ensures seamless data acquisition from connected devices. Together, these technologies contribute to improved energy efficiency, lower electricity costs, and reduced carbon emissions. Overall, the system provides a scalable, reliable, and sustainable solution for modern energy management and supports the development of smart homes and smart cities.

VIII. FUTURE SCOPE

The Smart Energy Management System Using IoT and Machine Learning can be further enhanced by incorporating advanced technologies to improve its intelligence, scalability, and efficiency. Future versions of the system can integrate deep learning and reinforcement learning algorithms to provide

more accurate energy demand forecasting, adaptive energy optimization, and automated decision-making based on user behavior and environmental conditions. The system can also be expanded to support renewable energy sources such as solar and wind power by optimizing energy generation, storage, and consumption in real time.

In addition, the system can leverage edge computing and 5G connectivity to reduce response time and enable faster processing of IoT sensor data. Blockchain technology can be incorporated to ensure secure energy transactions and protect user data. Future implementations may include electric vehicle (EV) charging management, smart grid integration, voice-assisted control, occupancy-based automation, and mobile application support for remote monitoring. These advancements will make the system more intelligent, energy-efficient, secure, and suitable for large-scale deployment in smart homes, industries, campuses, and smart city infrastructures.

IX. REFERENCES

- [1] M. A. Khan et al., "Optimizing Smart Home Energy Management for Sustainability Using Machine Learning," *Discover Applied Sciences*, vol. 6, 2024. DOI: 10.1007/s43621-024-00681-w.
- [2] "Smart Energy Management: Real-Time Prediction and Optimization Using IoT and Machine Learning," *Cogent Engineering*, vol. 11, 2024. DOI: 10.1080/23311916.2024.2390674.
- [3] M. Poyyamozi et al., "IoT—A Promising Solution to Energy Management in Smart Buildings," *Buildings*, vol. 14, no. 11, 2024. DOI: 10.3390/buildings14113446.
- [4] N. Hamed Al Hajri et al., "IoT and Machine Learning Based Green Energy Management System," *E3S Web of Conferences*, 2024. DOI: 10.1051/e3sconf/202449601008.
- [5] A. Ronco, L. Schulthess, D. Zehnder, and M. Magno, "Machine Learning In-Sensors: Computation-enabled Intelligent Sensors for Next Generation of IoT," 2024. DOI: 10.48550/arXiv.2407.21508.
- [6] M. A. Khan et al., "Optimizing Smart Home Energy Management for Sustainability Using Machine Learning Techniques," 2024. DOI:

10.1007/s43621-024-00681-w.

[7] M. Poyyamozi et al., "IoT—A Promising Solution to Energy Management in Smart Buildings," *Buildings*, vol. 14, no. 11, 2024. DOI: 10.3390/buildings14113446.

[8] "Smart Energy Management: Real-Time Prediction and Optimization Using IoT and Machine Learning," *Cogent Engineering*, vol. 11, 2024. DOI: 10.1080/23311916.2024.2390674.

[9] N. Hamed Al Hajri et al., "IoT and Machine Learning Based Green Energy Management System," *E3S Web of Conferences*, 2024. DOI: 10.1051/e3sconf/202449601008.

[10] A. Ronco, L. Schulthess, D. Zehnder, and M. Magno, "Machine Learning In-Sensors: Computation-enabled Intelligent Sensors for Next Generation of IoT," 2024. DOI: 10.48550/arXiv.2407.21508.

